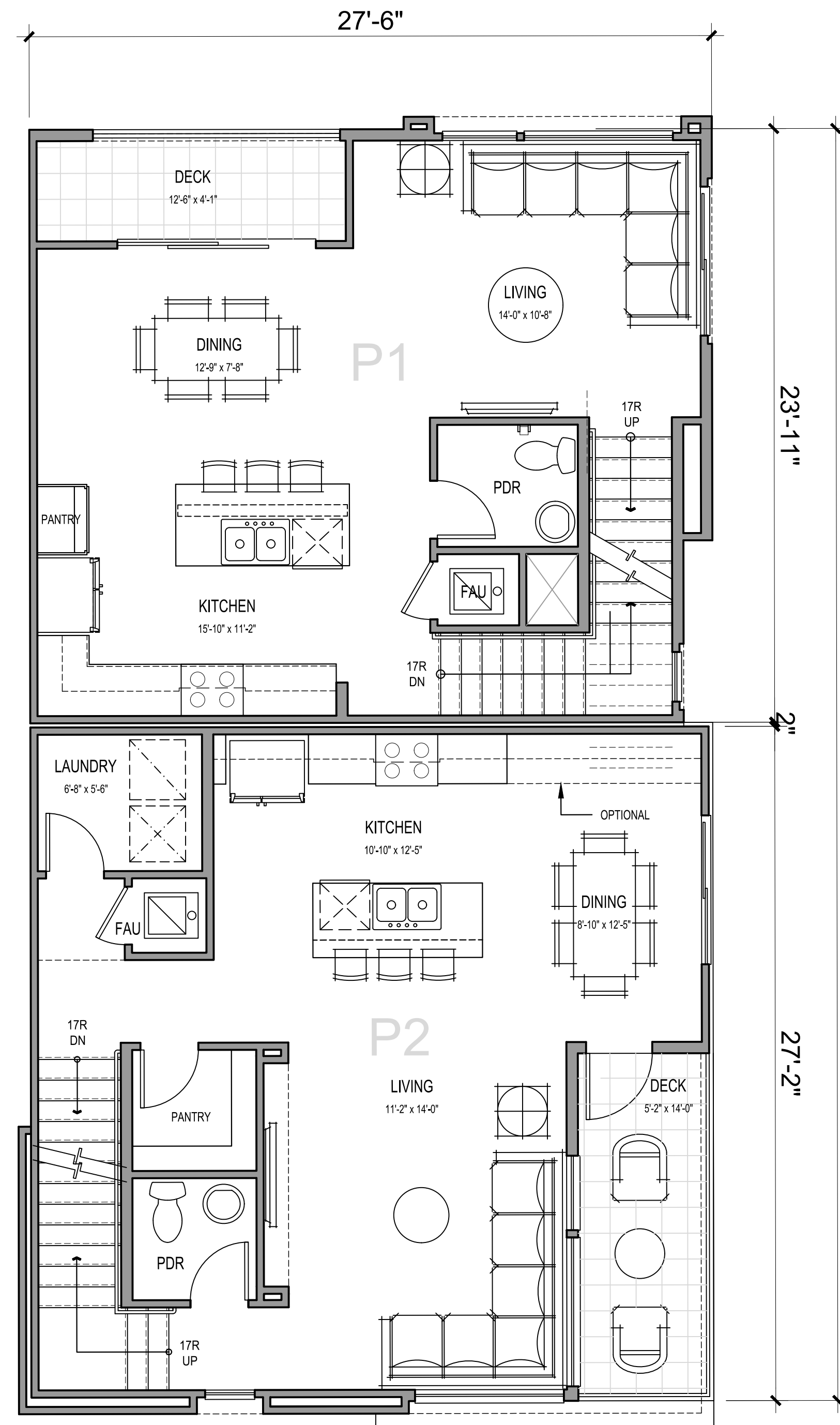
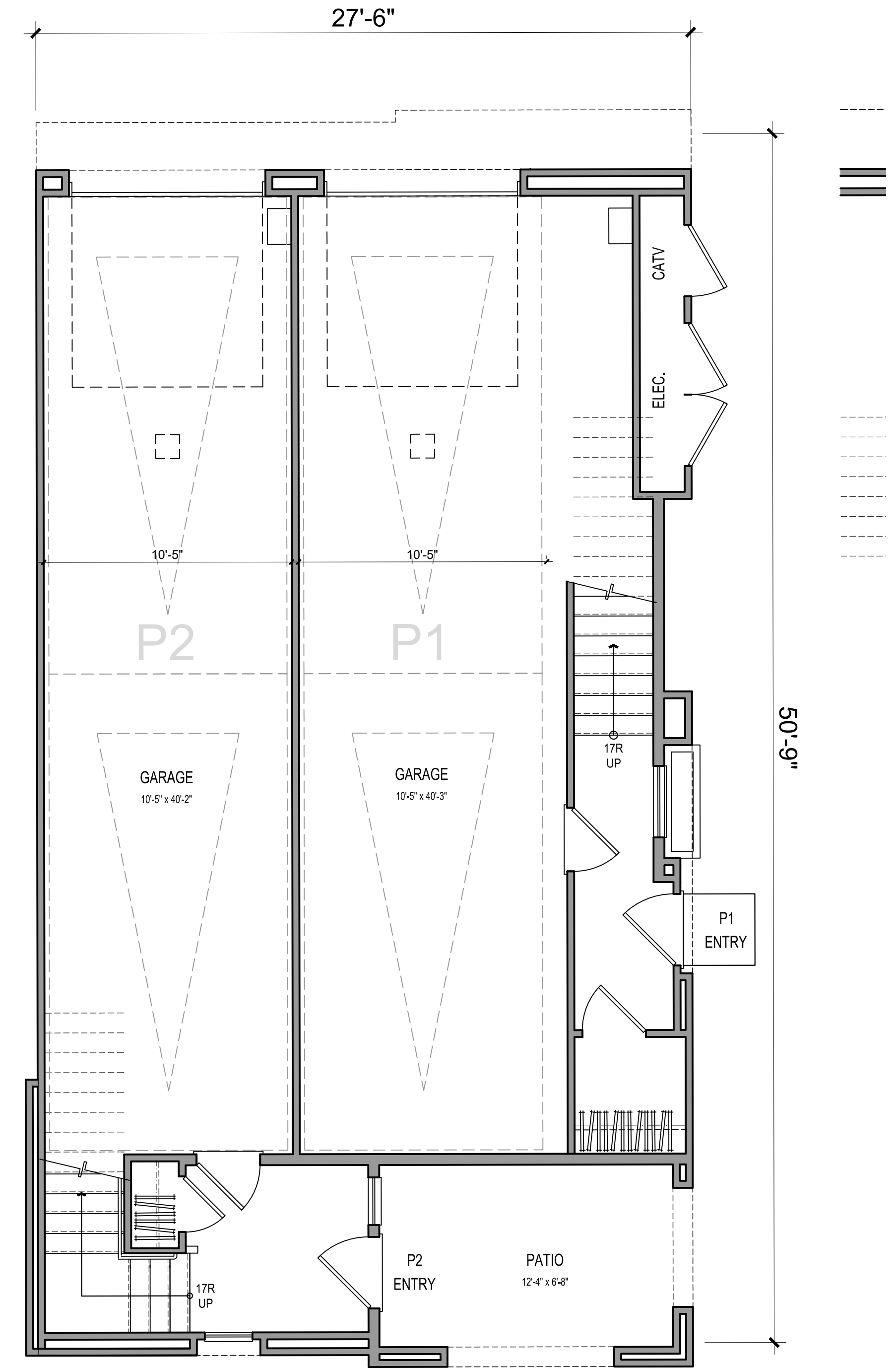


THIRD FLOOR, P1X OPTION 1



SECOND FLOOR



FIRST FLOOR

2 BEDS / 2.5 BATHS

P1 - GROSS SF	
1ST FLOOR	139 SQ. FT.
2ND FLOOR	579 SQ. FT.
3RD FLOOR	591 SQ. FT.
TOTAL LIVING	1309 SQ. FT.
DECK	57 SQ. FT.
GARAGE	529 SQ. FT.

P1 - NET SF	
1ST FLOOR	115 SQ. FT.
2ND FLOOR	543 SQ. FT.
3RD FLOOR	549 SQ. FT.
TOTAL LIVING	1208 SQ. FT.

3 BEDS / 2.5 BATHS

P2 - GROSS SF	
1ST FLOOR	135 SQ. FT.
2ND FLOOR	671 SQ. FT.
3RD FLOOR	685 SQ. FT.
TOTAL LIVING	1491 SQ. FT.
DECK + PATIO	158 SQ. FT.
GARAGE	458 SQ. FT.

P2 - NET SF	
1ST FLOOR	119 SQ. FT.
2ND FLOOR	630 SQ. FT.
3RD FLOOR	643 SQ. FT.
TOTAL LIVING	1393 SQ. FT.



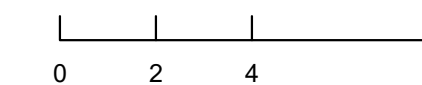
Architecture + Planning
17911 Von Karman Ave,
Suite 200
Irvine, CA 92614
949.851.2133
ktgy.com



Warmington Residential
3090 Pullman Street
Costa Mesa, CA 92626
714.434.4439

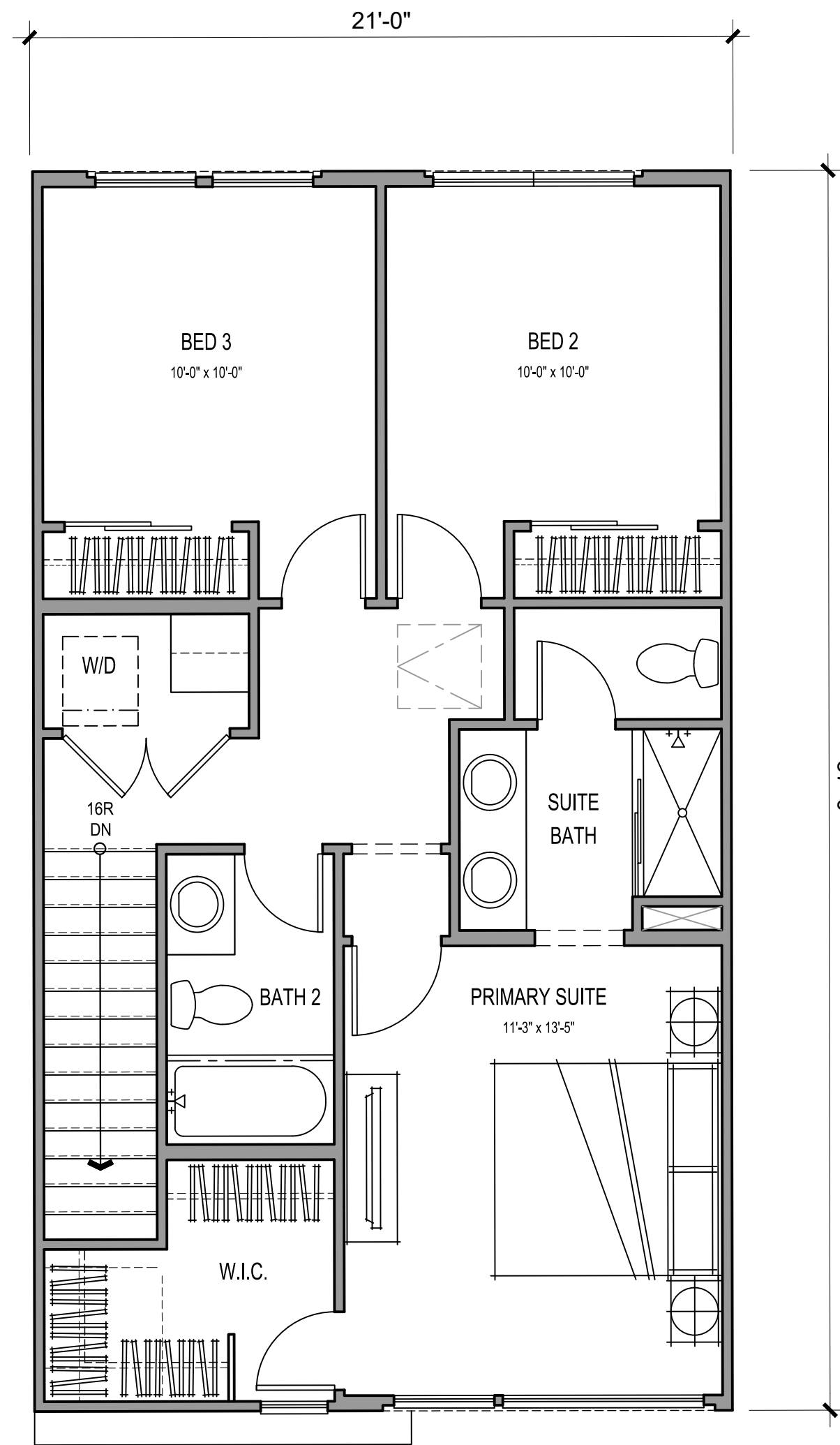
717 S. LYON STREET
SANTA ANA, CA KTGY # 2021-0430

Plot Date: 6/6/2022
1st Submittal: 12-16-2021
2nd Submittal: 04-13-2022
3rd Submittal: 06-06-2022

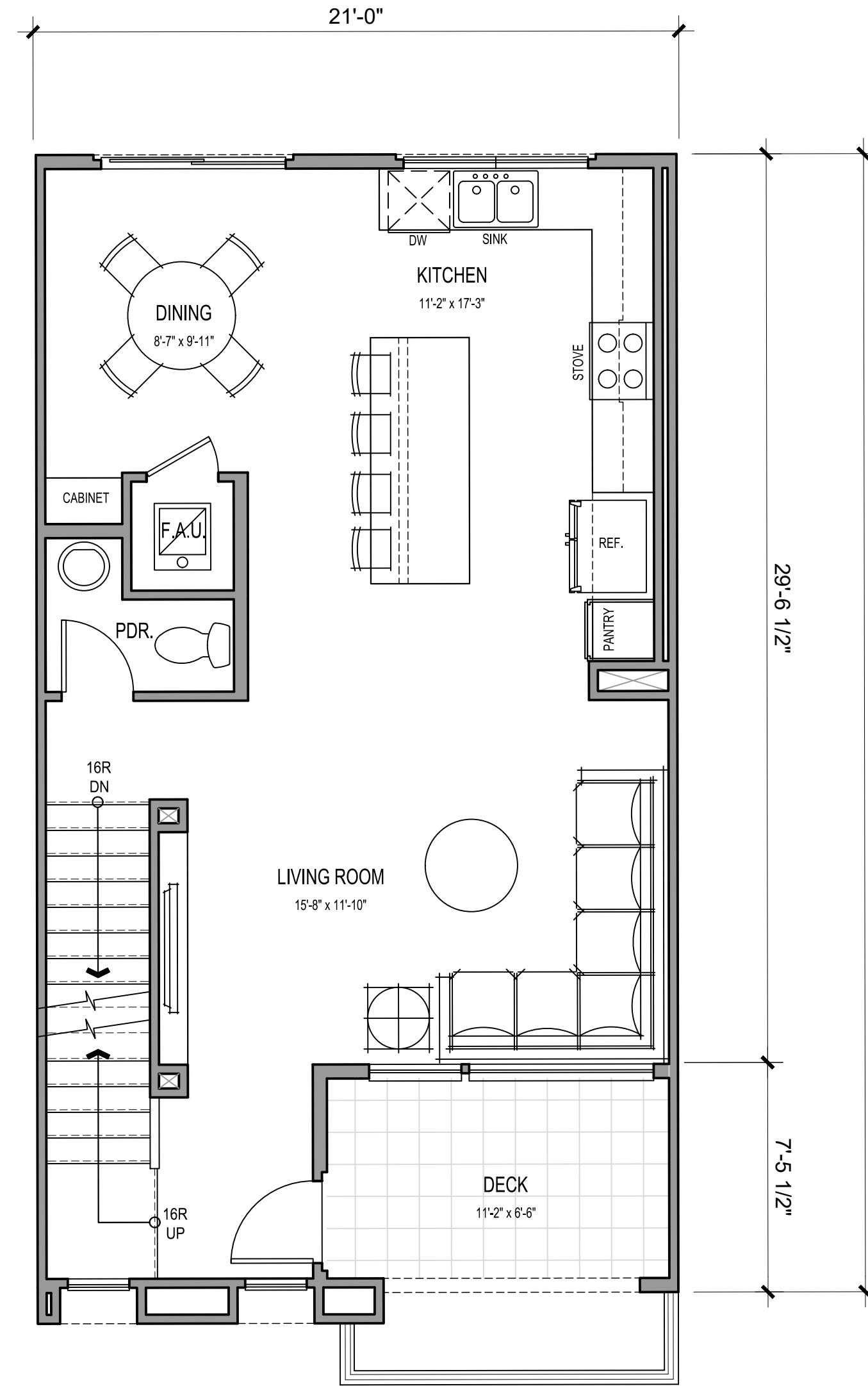


PLAN 1 & 2
UNIT PLANS

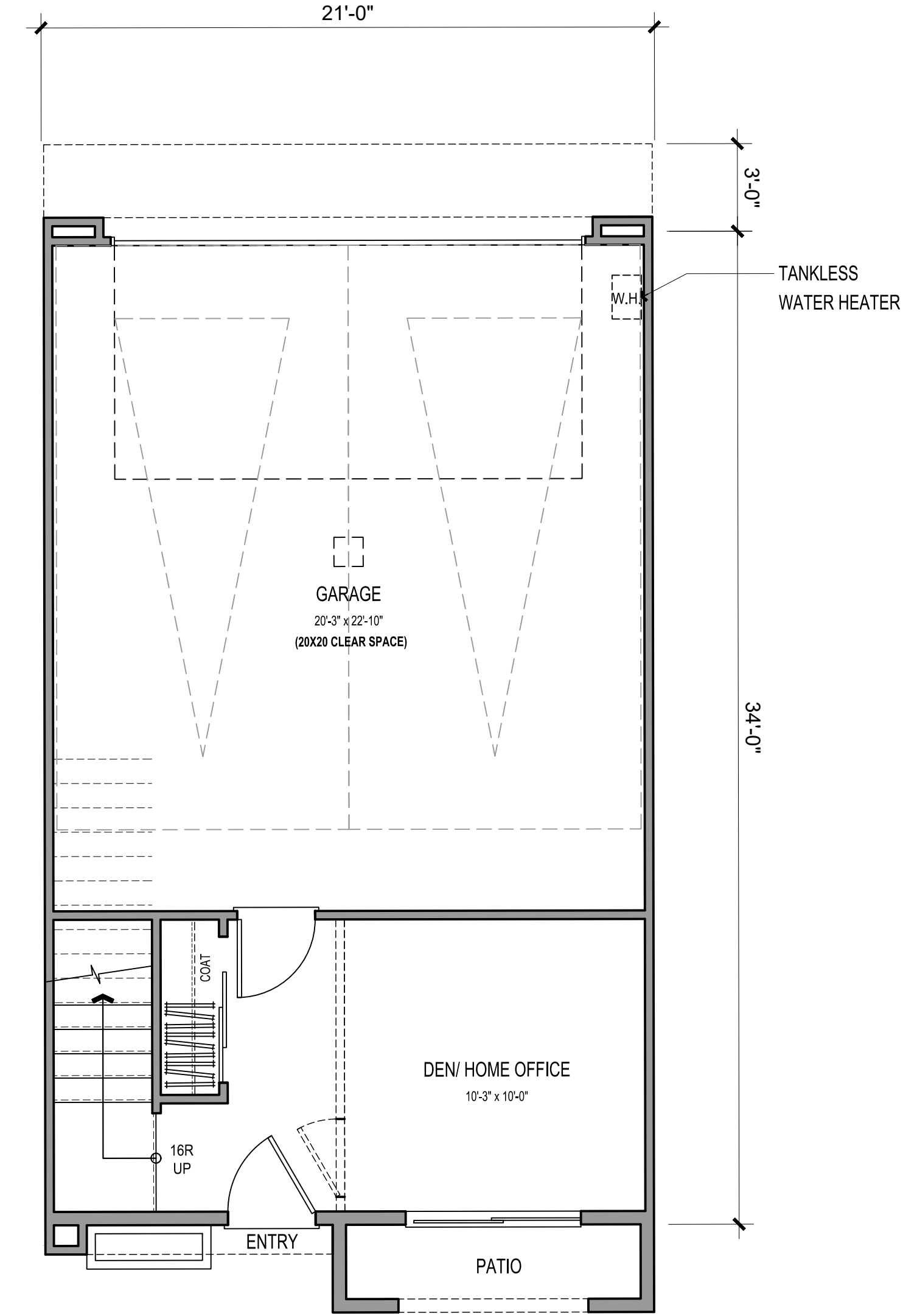
A3.00



THIRD FLOOR



SECOND FLOOR



FIRST FLOOR

3 BEDS + DEN/ 2.5 BATHS

GROSS SF	
1ST FLOOR	249 SQ. FT.
2ND FLOOR	691 SQ. FT.
3RD FLOOR	728 SQ. FT.
TOTAL LIVING	1669 SQ. FT.
GARAGE	484 SQ. FT.
PATIO	0 - 140 SQ. FT.
DECK	72 SQ. FT.

NET SF	
1ST FLOOR	206 SQ. FT.
2ND FLOOR	639 SQ. FT.
3RD FLOOR	684 SQ. FT.
TOTAL LIVING	1530 SQ. FT.



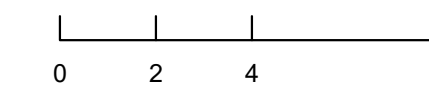
Architecture + Planning
17911 Von Karman Ave,
Suite 200
Irvine, CA 92614
949.851.2133
ktgy.com



Warmington Residential
3090 Pullman Street
Costa Mesa, CA 92626
714.434.4439

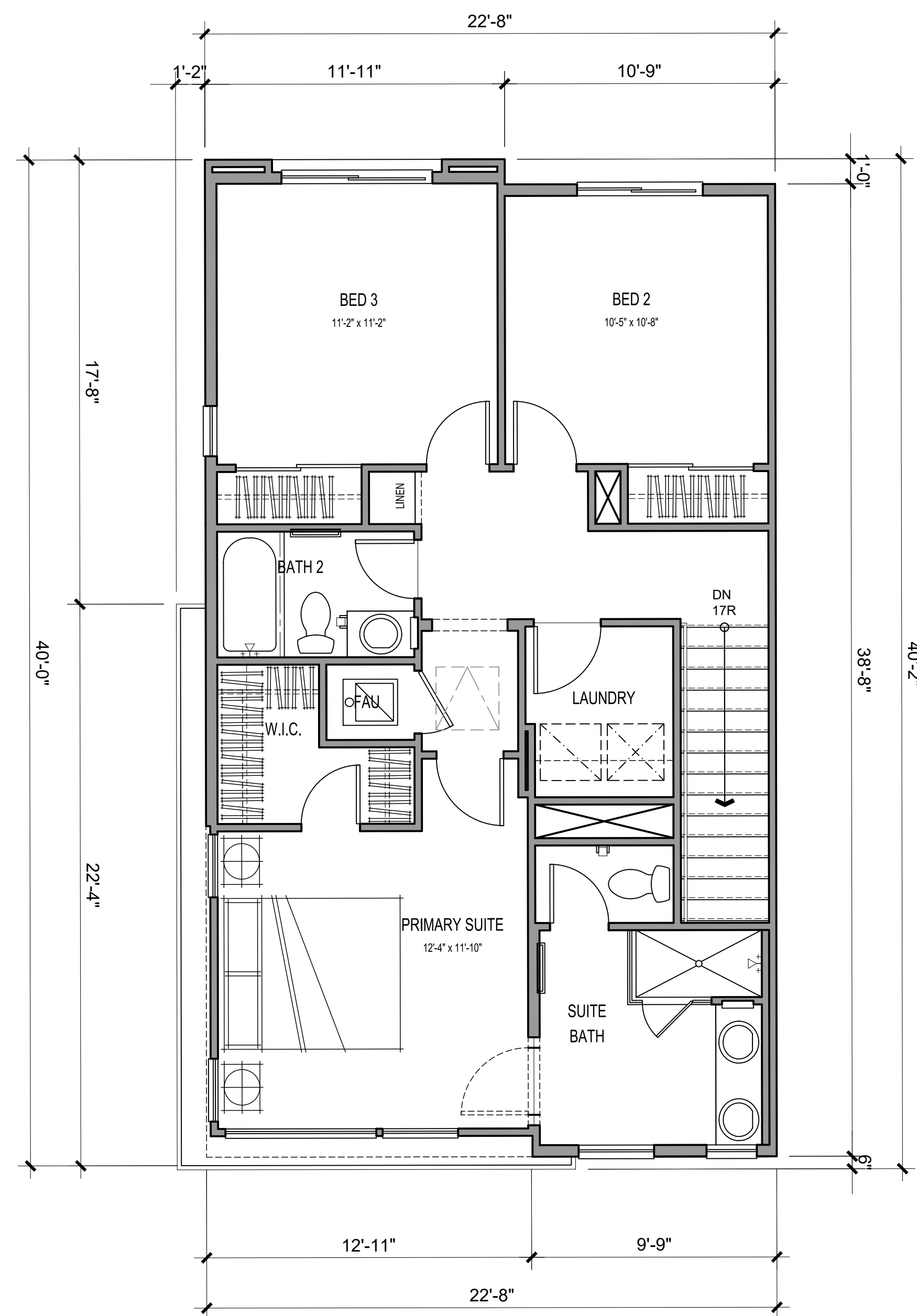
717 S. LYON STREET
SANTA ANA, CA KTGY # 2021-0430

Plot Date: 6/6/2022
1st Submittal: 12-16-2021
2nd Submittal: 04-13-2022
3rd Submittal: 06-06-2022

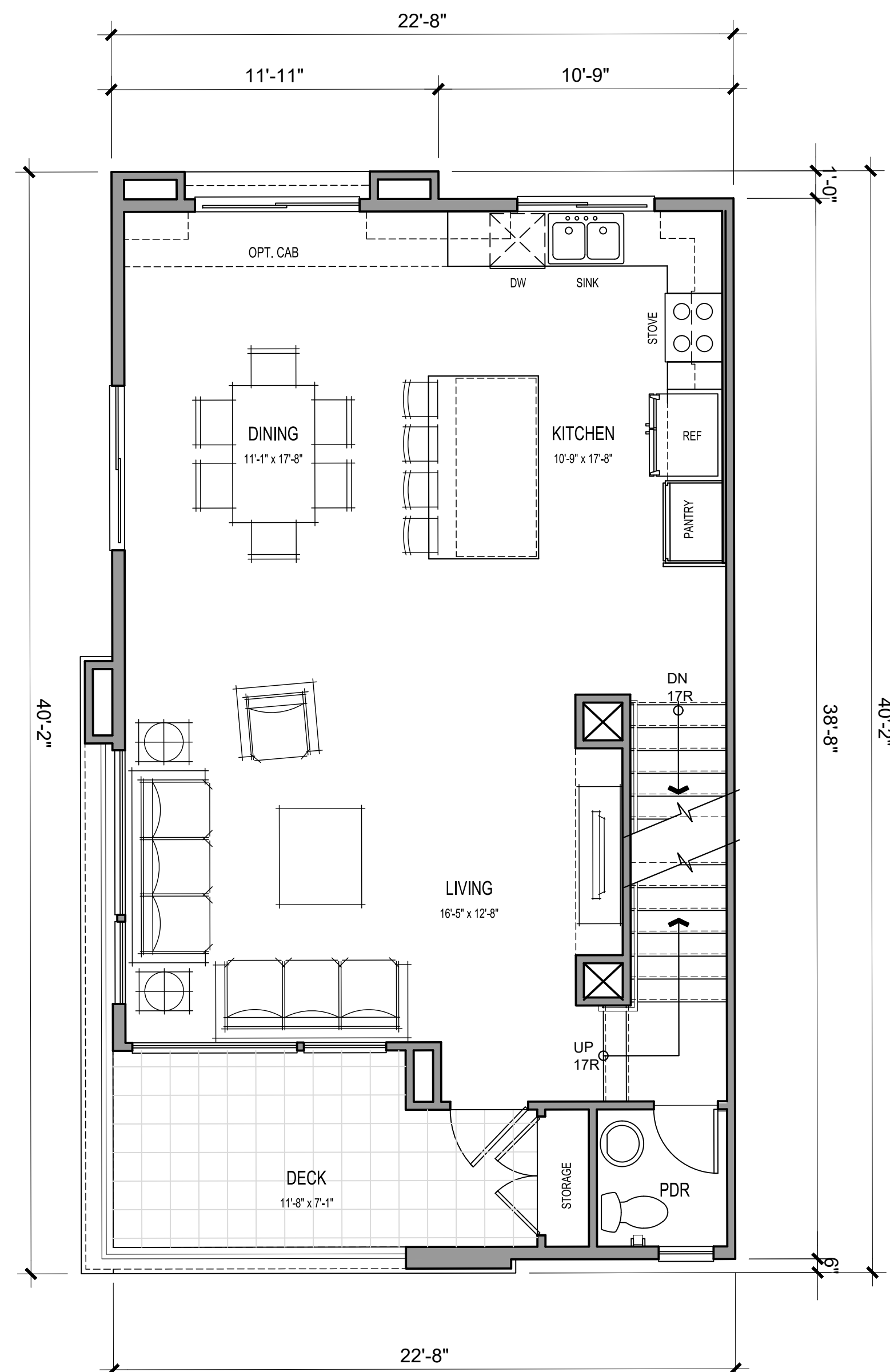


PLAN 3
UNIT PLANS

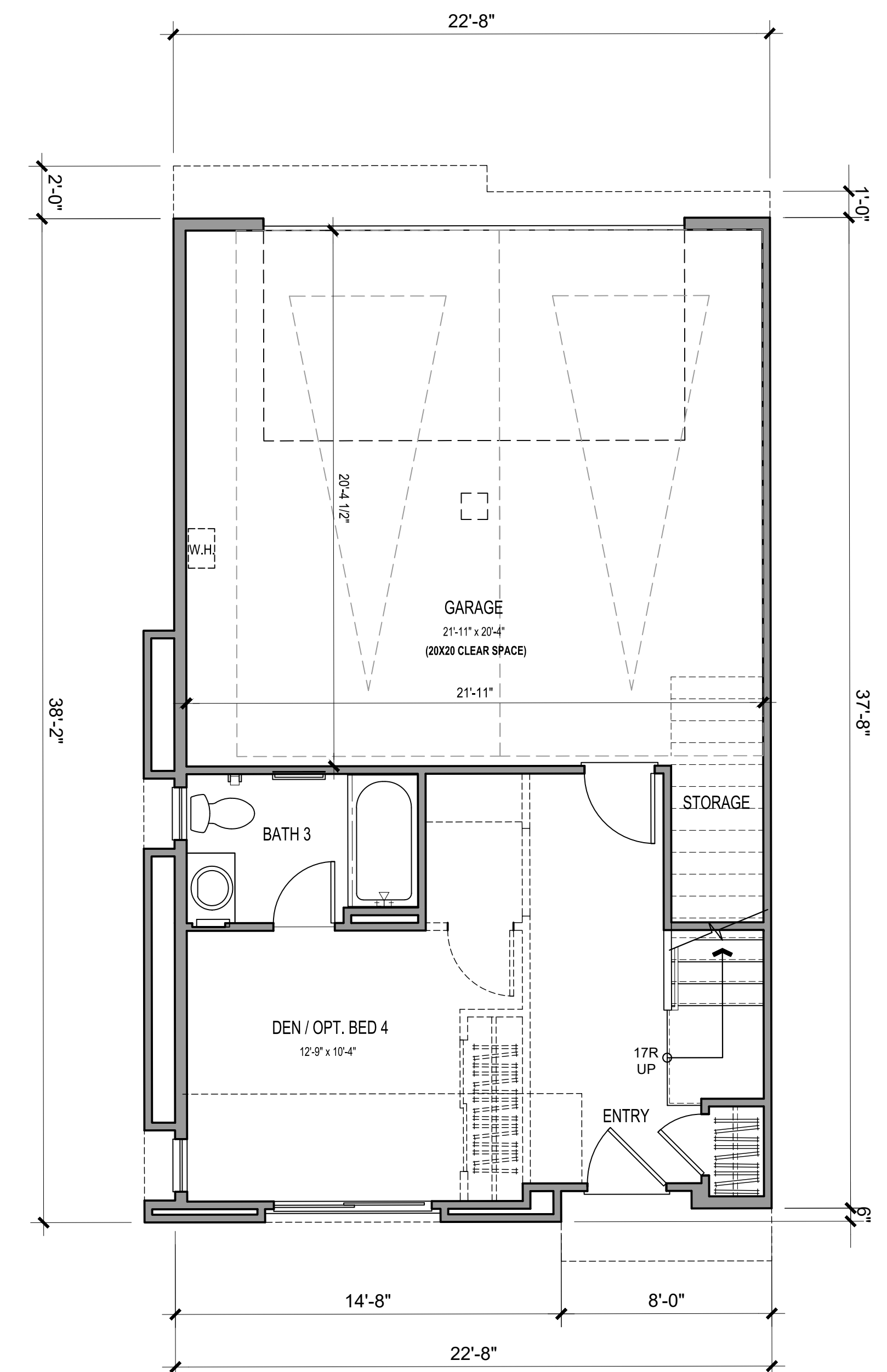
A3.10



THIRD FLOOR



SECOND FLOOR



FIRST FLOOR

3 BEDS + DEN/OPT. BED 4 / 3.5 BATHS

GROSS SF	
1ST FLOOR	398 SQ. FT.
2ND FLOOR	767 SQ. FT.
3RD FLOOR	827 SQ. FT.
TOTAL LIVING	1992 SQ. FT.
GARAGE	472 SQ. FT.
DECK	101 SQ. FT.
PATIO	0 - 140 SQ. FT.

NET SF	
1ST FLOOR	364 SQ. FT.
2ND FLOOR	720 SQ. FT.
3RD FLOOR	761 SQ. FT.
TOTAL LIVING	1845 SQ. FT.



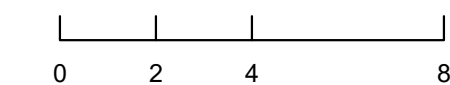
Architecture + Planning
 17911 Von Karman Ave,
 Suite 200
 Irvine, CA 92614
 949.851.2133
 ktgy.com



Warmington Residential
 3090 Pullman Street
 Costa Mesa, CA 92626
 714.434.4439

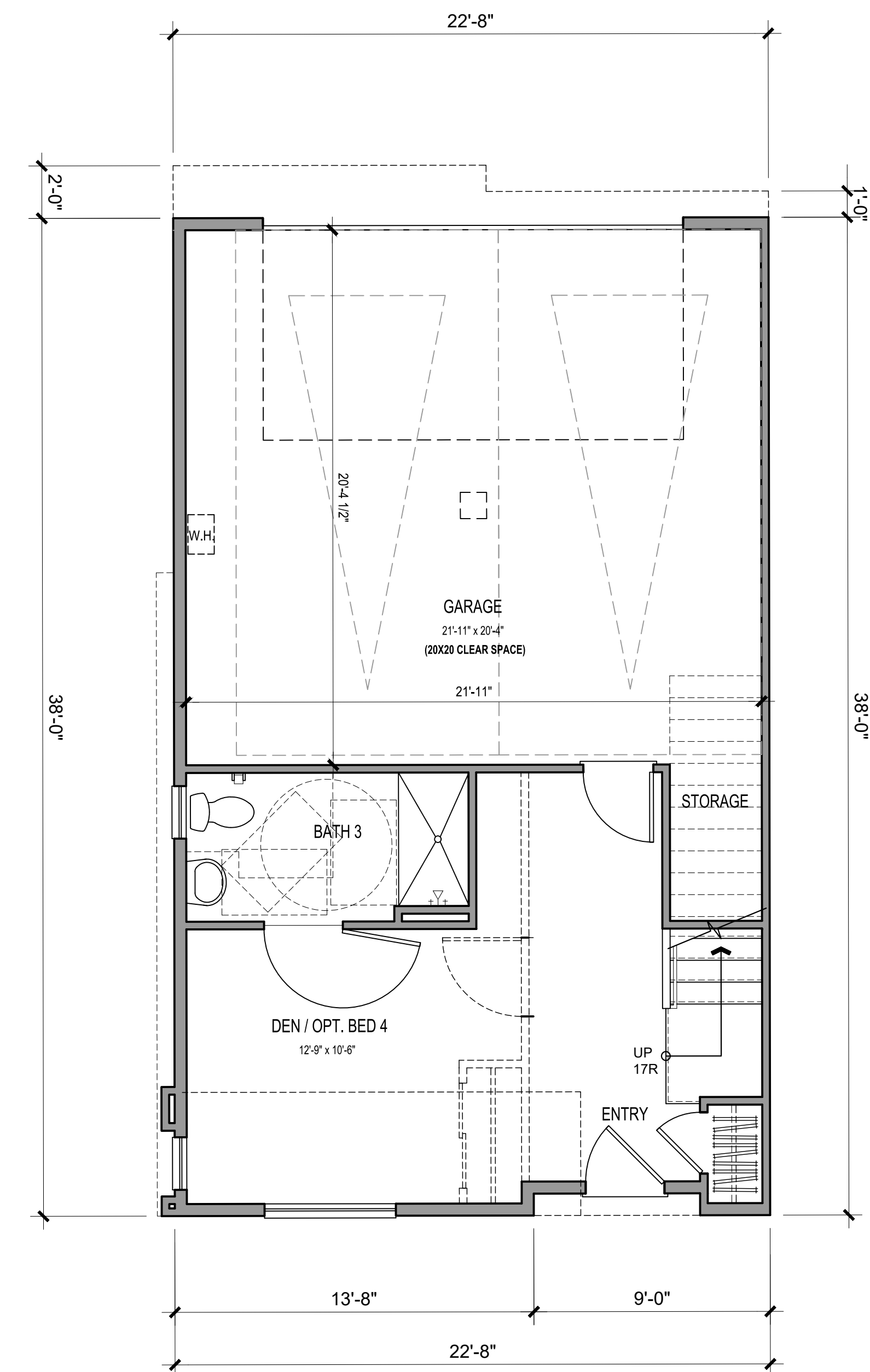
717 S. LYON STREET
 SANTA ANA, CA KTGY # 2021-0430

Plot Date: 6/6/2022
 1st Submittal: 12-16-2021
 2nd Submittal: 04-13-2022
 3rd Submittal: 06-06-2022



PLAN 4
 UNIT PLANS

A3.20



FIRST FLOOR (ACCESSIBLE)



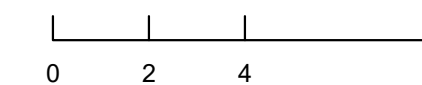
Architecture + Planning
17911 Von Karman Ave,
Suite 200
Irvine, CA 92614
949.851.2133
ktgy.com



Warmington Residential
3090 Pullman Street
Costa Mesa, CA 92626
714.434.4439

717 S. LYON STREET
SANTA ANA, CA KTGY # 2021-0430

Plot Date: 6/6/2022
1st Submittal: 12-16-2021
2nd Submittal: 04-13-2022
3rd Submittal: 06-06-2022



PLAN 4 - ACCESSIBLE
UNIT PLANS

A3.21